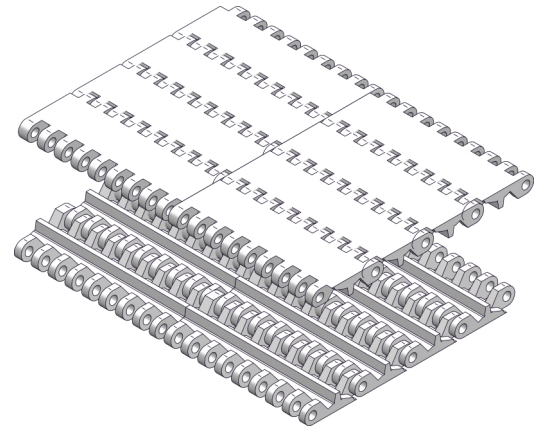


B / MPB SERIES



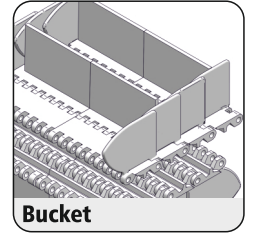
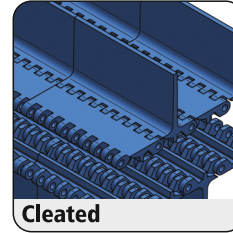
Pitch	50.8 mm
Surface type	Flat Top
Belt Thickness	16 mm
Pin Dia	8 mm
Drive System	Central
Standard Size Width	151 mm (± 33.5 mm)
Open Area	21 %
Approved by	FDA
Belt Movement	Bi - Directional



AVAILABLE COLOURS

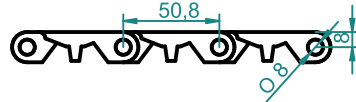
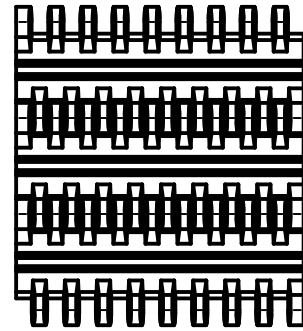
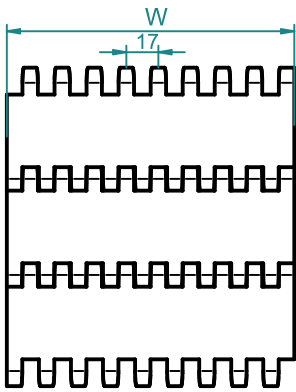


For Customised Colour variation please contact our sales team.



TOP

BOTTOM



FRONT

SIDE

AVAILABLE WIDTH (W)

In mm	151	301	452	602	755	906	1057	+...n
In inch	5.94"	11.8"	17.8"	23.7"	29.7"	35.7"	42."	+...n

* For exact customised width dimension please contact our sales team.

BELT DATA

Belt Material	Belt Strength		Belt Temperature		Belt Weight	
	N/m	Kg/m	°C / °F Min	°C / °F Max	Kg/m ²	lb/ft ²
Polypropylene (PP)	14000	1400	+1 / +33.8	+90 / +194	7.8	1.59
Acetal / POM	20600	2060	-40 / -40	+90 / +194	9.95	2.04

BRAND COMPATIBILITY

ATC	UNI	HABASIT	HAIRISE	EURO	SCAN	MODUTECH	HONG'S	INTRALOX
B-SERIES / MPB	UNI MPB UNI BLB	M5010 M5015	HAR800	SERIES 850	S.50-808	EC 508 C	HS-100A	SERIES 800

*The above content is only for reference.

*Bold series are direct replacement with individual brands.

ACCESSORIES

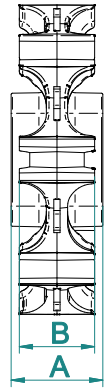
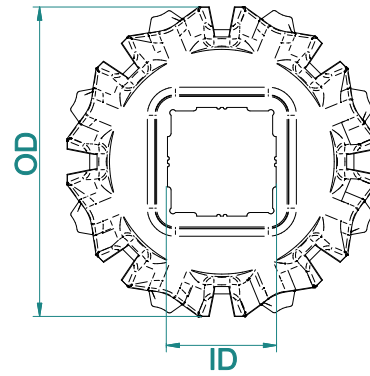
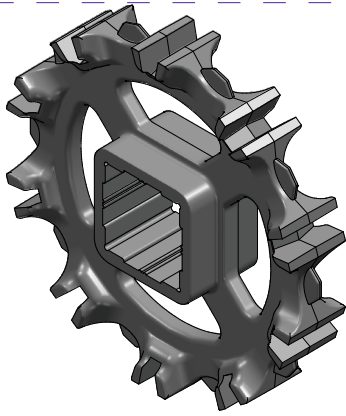
Cleat Height	25 TO 100 mm (Customised)
Scoop Cleat Height	76 / 102 mm
Bent Cleat Height	----
Side Wall Height	50 / 75 / 100 mm

SUGGESTED INDUSTRIES



B / MPB

SPROCKET DATA



Material: POM/ Polyketone / UHMW/ Nylon

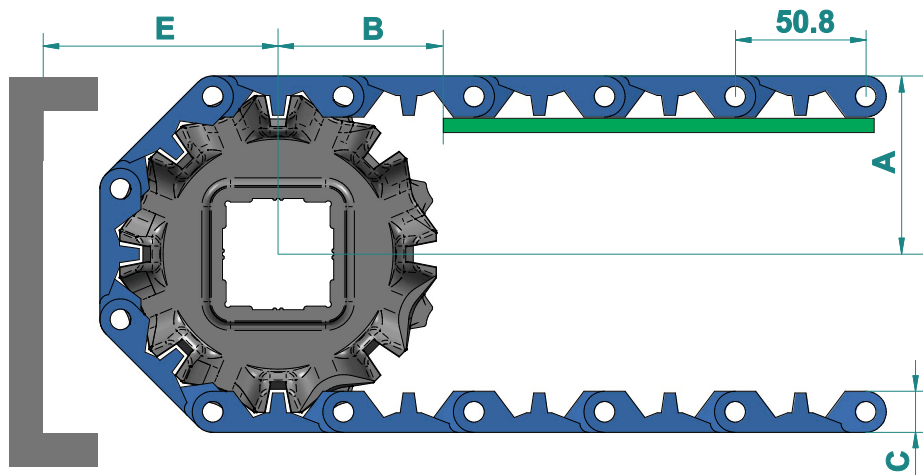
Temp. Range: -40 to 90 °C

No of teeth	OD		A		B		Available ID				
	mm	inch	mm	inch	mm	inch	M/C	M/D			
8	123	4.8	36.5	1.4	30	1.2	☆	○ - 25,30,35	□ - 40		
10	156	6.1	36.5	1.4	30	1.2	☆	○ - 25,30,35	□ - 40		

* A- Sprocket thickness, B- Teeth thickness, ID- Inner diameter, OD- Outer diameter, M/C - Machined, M/D - Moulded.

* Type of Hole : ☆ - Round & Square , □ - Square, ○ - Round
*All the dimensions have tolerance of ± 1 or 2 mm approximately.

CONVEYOR DESIGN DATA



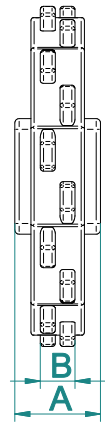
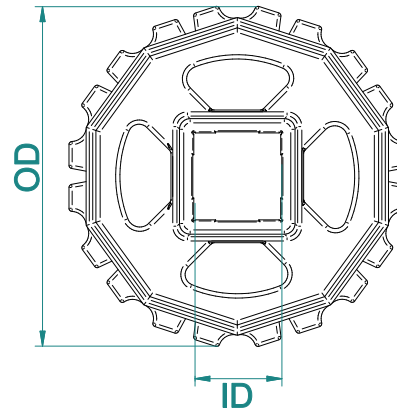
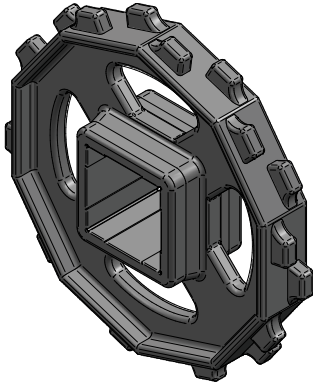
No. of Teeth	OD		A		B		C		E	
	mm	inch	mm	inch	mm	inch	mm	inch	mm	inch
8	123	4.8	70	2.8	86	3.4	16	0.6	73.5	2.9
10	156	6.1	85	3.3	109	4.3	16	0.6	90	3.5

* A- Distance between shaft centre to belt top,
B- Distance between shaft centre to beginning of wear strip,

C- Belt thickness, E- Distance between shaft centre to conveyor structure/ frame.
*All the dimension have tolerance ± 1 or 2 mm approximately.

B / MPB

SPROCKET DATA



Material: POM/ Polyketone / UHMW/ Nylon

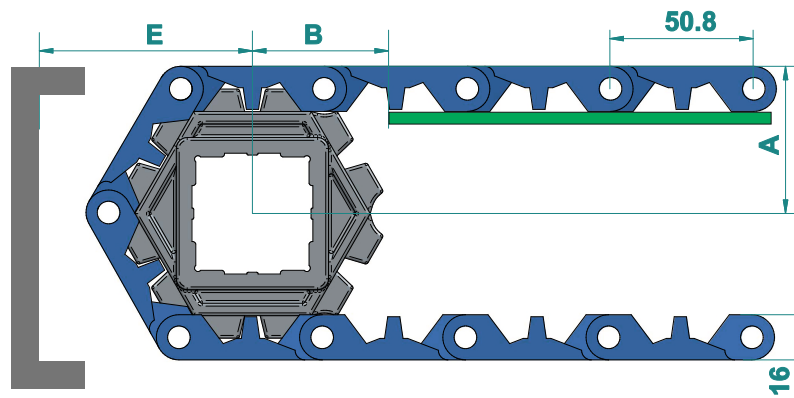
Temp. Range: -40 to 90 °C

No of teeth	OD		A		B		Available ID	
	mm	inch	mm	inch	mm	inch	M/C	M/D
6	92	3.6	40	1.6	16	0.6	☆	○ - 25,30,35 □ - 40
10	156	6.1	40	1.6	16	0.6	☆	○ - 25,30,35 □ - 40
12	191	7.5	40	1.6	16	0.6	☆	○ - 25,30,35 □ - 40

* A- Sprocket thickness, B- Teeth thickness, ID- Inner diameter, OD- Outer diameter, M/C - Machined, M/D - Moulded

* Type of Bore : ☆ - Round & Square , □ - Square, ○ - Round
*All the dimension have tolerance ± 1 or 2 mm approximately.

CONVEYOR DESIGN DATA



No. of Teeth	OD		A		B		C		E	
	mm	inch	mm	inch	mm	inch	mm	inch	mm	inch
6	132	3.6	53	2.1	64	2.5	16	0.6	58	2.3
10	156	6.1	78	3.1			16	0.6		
12	191	7.5	93	3.6			16	0.6		

* A- Distance between shaft centre to belt top
B- Distance between shaft centre to beginning of wear strip,

C- Belt thickness, E- Distance between shaft centre to conveyor structure/ frame
*All the dimension have tolerance ± 1 or 2 mm approximately.