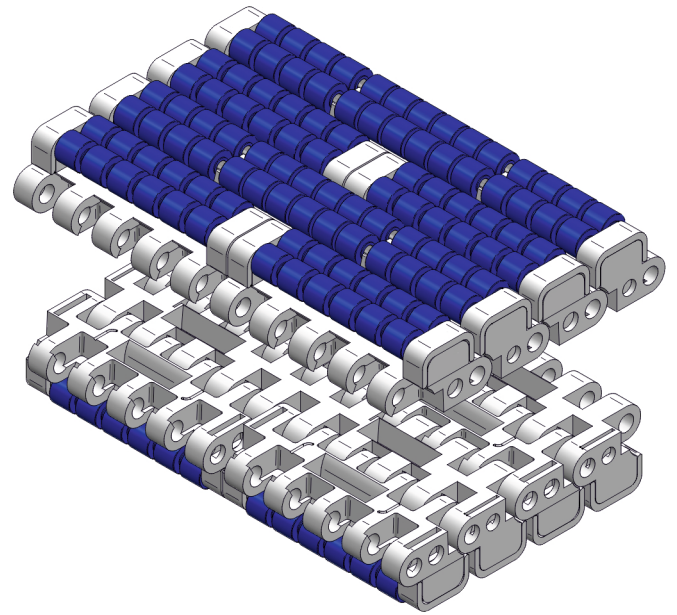


T-1500 FLUSH GRID



SERIES

Pitch	25.4 mm
Surface type	Roller Top
Belt Thickness	27 mm
Pin Dia	6.5 mm
Roller Pin Material	SS 304
Roller Diameter	11 mm
Drive System	Central
Standard Size Width	85 / 170 mm (\pm 85 mm)
Open Area	0 %
Approved by	FDA
Belt Movement	Bi - Directional



AVAILABLE COLOURS



For Customised Colour variation please contact our sales team.

TOP

BOTTOM

FRONT

SIDE

AVAILABLE WIDTH (W)

In mm	85	170	255	340	425	510	680	+...n
In inch	3.4"	6.7"	10"	13.4"	16.7"	20"	26.8"	+...n

* For exact customised width dimension please contact our sales team.

BELT DATA

Belt Material	Belt Strength		Belt Temperature		Belt Weight	
	N/m	Kg/m	°C / °F Min	°C / °F Max	Kg/m ²	lb/ft ²
Polypropylene (PP)	11000	1100	+1 / +33.8	+90 / +194	6.13	1.26
Acetal / POM	17000	1700	-40 / -40	+90 / +194	8.5	1.74

BRAND COMPATIBILITY

ATC	ASBELT	HABASIT	HAIRISE	MOVEX	INTRALOX	YA-VA	HONG'S
T-1500	AST10053	M2620	HAR1005	551 LBP	SERIES 1400	YS-100-1	HS-LBP1005

*The above content is only for reference.

*Bold series are direct replacement with individual brands.

ACCESSORIES

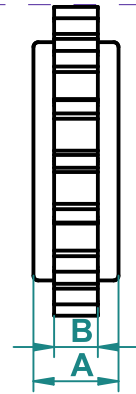
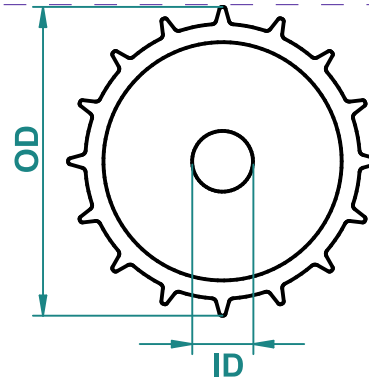
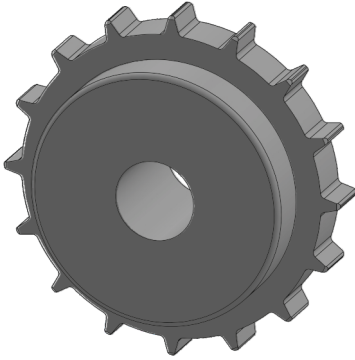
Cleat Height	----
Scoop Cleat Height	----
Bent Cleat Height	----
Side Wall Height	----

SUGGESTED INDUSTRIES



T-1500 FLUSH GRID

SPROCKET DATA



Material: POM/ Polyketone / UHMW/ Nylon

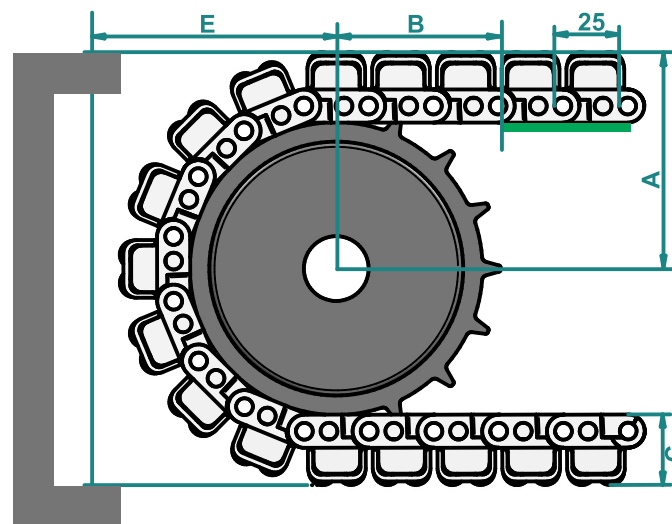
Temp. Range: -40 to 90 °C

No of teeth	OD		A		B		M/C	Available ID	
	mm	inch	mm	inch	mm	inch		M/D	M/D
14	114	4.5					☆	○ - 25,30,35	□ - 40
16	130	5.1					☆	○ - 25,30,35	□ - 40
18	147	5.8					☆	○ - 25,30,35	□ - 40

* A- Sprocket thickness, B- Teeth thickness, ID- Inner diameter, OD- Outer diameter, M/C - Machined, M/D - Moulded.

* Type of Hole : ☆ - Round & Square , □ - Square, ○ - Round
*All the dimensions have tolerance of ± 1 or 2 mm approximately.

CONVEYOR DESIGN DATA



No. of Teeth	OD		A		B		C		E	
	mm	inch	mm	inch	mm	inch	mm	inch	mm	inch
14	114	4.49								
16	130	5.12								
18	147	5.79								

* A- Distance between shaft centre to belt top,
B- Distance between shaft centre to beginning of wear strip,

C- Belt thickness, E- Distance between shaft centre to conveyor structure/ frame.
*All the dimension have tolerance ± 1 or 2 mm approximately.