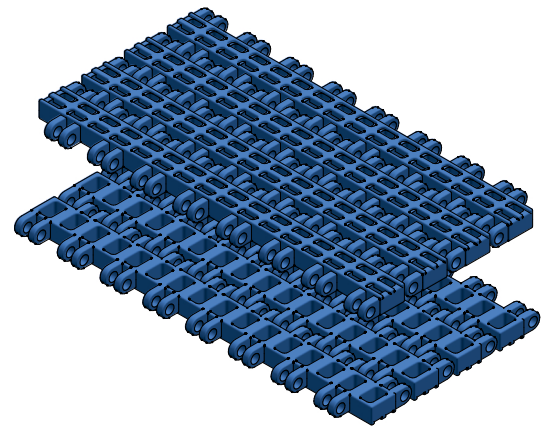


# T-1700 FLUSH GRID

## SERIES



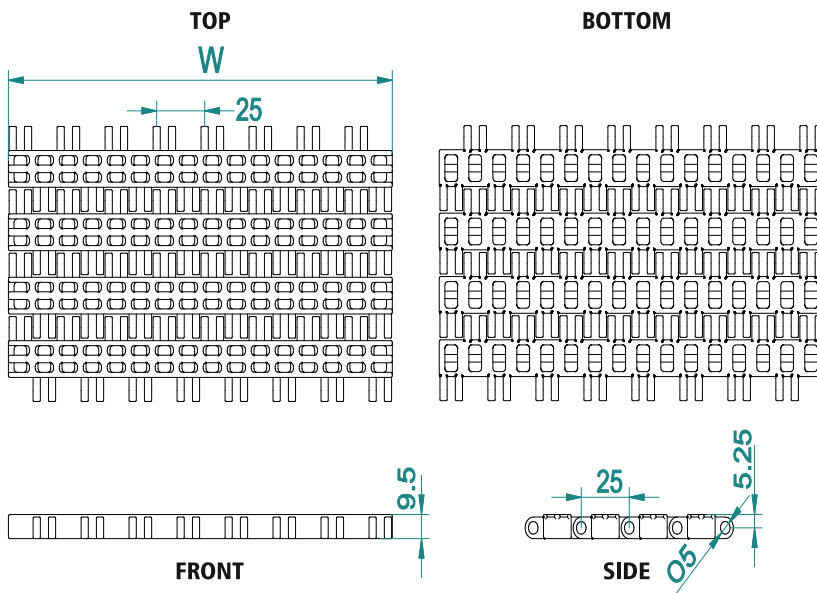
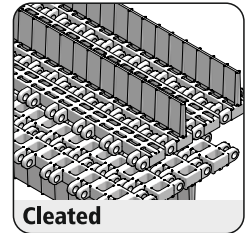
Pitch	25 mm
Surface type	Flush Grid
Belt Thickness	9.5 mm
Pin Dia	4.5 mm
Drive System	Central
Standard Size Width	200 mm (± 25 mm)
Open Area	27 %
Approved by	FDA
Belt Movement	Bi - Directional



### AVAILABLE COLOURS



For Customised Colour variation please contact our sales team.



### ACCESSORIES

Cleat Height*	9 To 50 mm
Scoop Cleat Height	-----
Bent Cleat Height	-----
Side Wall Height	25 / 50 mm

\* Can be customised

### SUGGESTED INDUSTRIES



### AVAILABLE WIDTH (W)

In mm	200	250	300	400	450	500	600	+...n
In inch	7.9"	9.8"	11.8"	15.7"	17.7"	19.7"	23.6"	+...n

\* For exact customised width dimension please contact our sales team.

### BELT DATA

Belt Material	Belt Strength		Belt Temperature		Belt Weight	
	N/m	Kg/m	°C / °F Min	°C / °F Max	Kg/m <sup>2</sup>	lb/ft <sup>2</sup>
Polypropylene (PP)	10100	1010	+1 / +33.8	+90 / +194	8.7	1.78
Acetal / POM	15400	1540	-40 / -40	+90 / +194	11.9	2.44

### BRAND COMPATIBILITY

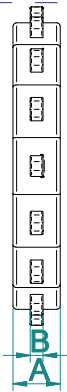
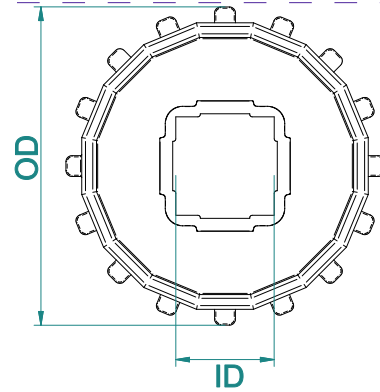
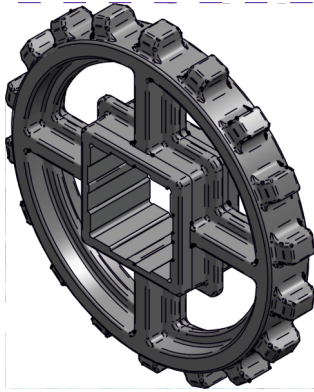
ATC	SCAN	HABASIT	UNI	MODUTECH	INTRALOX	MOVEX	HONG'S
T-1700	S.25-411	208	UNI SNB	XP 254	SERIES 1200	550 FG	HS-3000B

\*The above content is only for reference.

\*Bold series are direct replacement with individual brands.

# T-1700 FLUSH GRID

## SPROCKET DATA



Material: POM/ Polyketone / UHMW/ Nylon

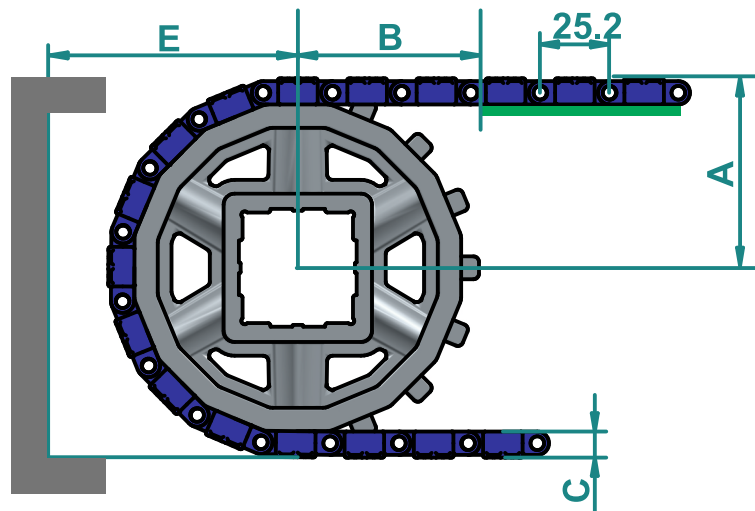
Temp. Range: -40 to 90 °C

No of teeth	OD		A		B		Available ID	
	mm	inch	mm	inch	mm	inch	M/C	M/D
12	100	3.9	19	0.7	5	0.2	☆	○ - 25,30,35    □ - 40
16	132	5.2	19	0.7	5	0.2	☆	○ - 25,30,35    □ - 40
20	166	6.5	19	0.7	5	0.2	☆	○ - 25,30,35    □ - 40

\* A- Sprocket thickness, B- Teeth thickness, ID- Inner diameter, OD- Outer diameter, M/C - Machined, M/D - Moulded.

\* Type of Hole : ☆ - Round & Square , □ - Square, ○ - Round  
\*All the dimensions have tolerance of ± 1 or 2 mm approximately.

## CONVEYOR DESIGN DATA



No. of Teeth	OD		A		B		C		E	
	mm	inch	mm	inch	mm	inch	mm	inch	mm	inch
12	100	3.9	55	2.1	70	2.8	9.5	0.4		
16	132	5.2	69	2.7	92.5	3.6	9.5	0.4	78	3.1
20	166	6.5	84	3.3	116	4.6	9.5	0.4	95	3.7

\* A- Distance between shaft centre to belt top,  
B- Distance between shaft centre to beginning of wear strip,

C- Belt thickness, E- Distance between shaft centre to conveyor structure/ frame.  
\*All the dimension have tolerance ± 1 or 2 mm approximately.