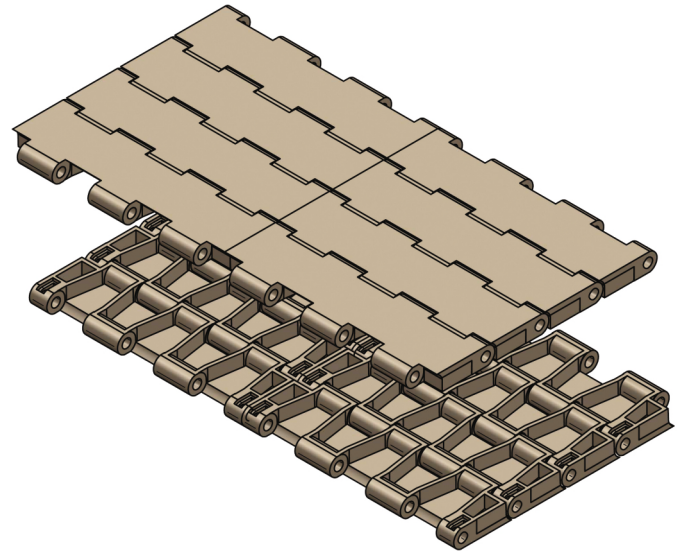


# T-1300 SERIES



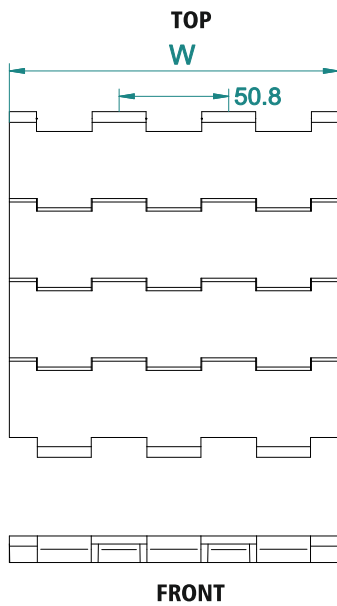
Pitch	38.1 mm
Surface type	Flat Top
Belt Thickness	13 mm
Pin Dia	4.5 mm
Drive System	Central
Standard Size Width	152.6 mm (± 76.4 mm)
Open Area	0 %
Approved	FDA
Belt Movement	Bi - Directional



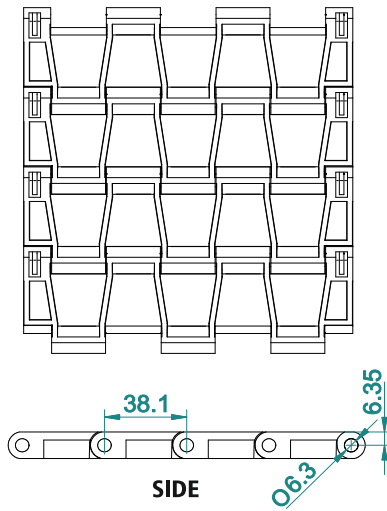
## AVAILABLE COLOURS



For Customised Colour variation please contact our sales team.



## BOTTOM



## ACCESSORIES

Cleat Height	----
Scoop Cleat Height	----
Bent Cleat Height	----
Side Wall Height	----

## SUGGESTED INDUSTRIES



## AVAILABLE WIDTH (W)

In mm	153	229	305	382	458	535	688	+...n
In inch	6"	9"	12"	15"	18"	20.7"	27.1"	+...n

\* For exact customised width dimension please contact our sales team.

## BELT DATA

Belt Material	Belt Strength		Belt Temperature		Belt Weight	
	N/m	Kg/m	°C / °F Min	°C / °F Max	Kg/m <sup>2</sup>	lb/ft <sup>2</sup>
Polypropylene (PP)	8080	808	+1 / +33.8	+90 / +194	9.69	1.98
Acetal / POM	17000	1728	-40 / -40	+90 / +194	11.2	2.29

## BRAND COMPATIBILITY

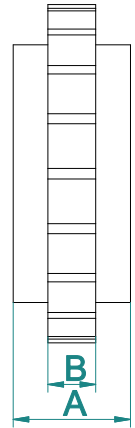
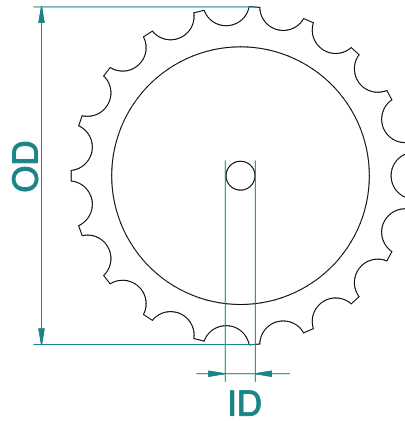
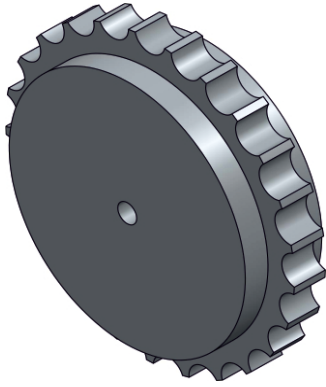
ATC	EURO	HABASIT	HAIRISE	UNI	INTRALOX	YA-VA	HONG'S
T-1200	SERIES 40	ST 615	<b>HAR4705</b>	<b>UNI SSB</b>	SERIES 1200	----	----

\*The above content is only for reference.

\*Bold series are direct replacement with individual brands.

# T-1300

## SPROCKET DATA



Material: POM/ Polyketone / UHMW/ Nylon



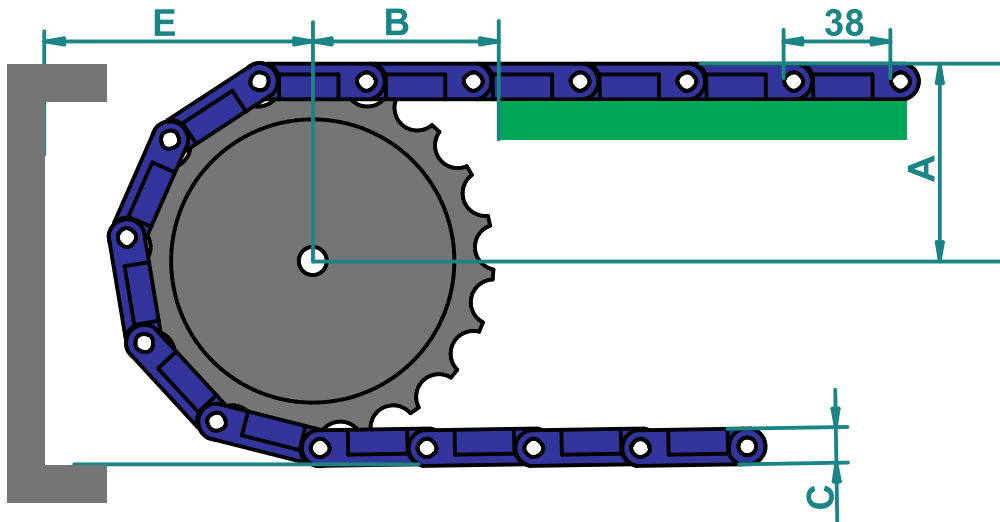
Temp. Range: -40 to 90 °C

No of teeth	OD		A		B		M/C	Available ID
	mm	inch	mm	inch	mm	inch		
17	104	4.09	40.5	1.59	16.5	0.65	☆	
19	117	4.61	40.5	1.59	16.5	0.65	☆	
21	129	5.08	40.5	1.59	16.5	0.65	☆	
23	141	5.55	40.5	1.59	16.5	0.65	☆	
25	153	6.02	40.5	1.59	16.5	0.65	☆	

\* A- Sprocket thickness, B- Teeth thickness, ID- Inner diameter, OD- Outer diameter, M/C - Machined, M/D - Moulded

\* Type of Bore : ☆ - Round & Square, □ - Square, ○ - Round  
\*All the dimension have tolerance  $\pm 1$  or  $2$  mm approximately.

## CONVEYOR DESIGN DATA



No. of Teeth	OD		A		B		C		E	
	mm	inch	mm	inch	mm	inch	mm	inch	mm	inch
17	104	4.09	60	2.36	72	2.83	13	0.51	64	2.52
19	117	4.61	66	2.60	81	3.19	13	0.51	70	2.76
21	129	5.08	72	2.81	90	3.54	13	0.51	76.5	3.01
23	141	5.55	77	3.03	98	3.86	13	0.51	82	3.23
25	153	6.05	82	3.23	107	4.21	13	0.51	88	3.46

\* A- Distance between shaft centre to belt top  
B- Distance between shaft centre to beginning of wear strip,

C- Belt thickness, E- Distance between shaft centre to conveyor structure/ frame  
\*All the dimension have tolerance  $\pm 1$  or  $2$  mm approximately.