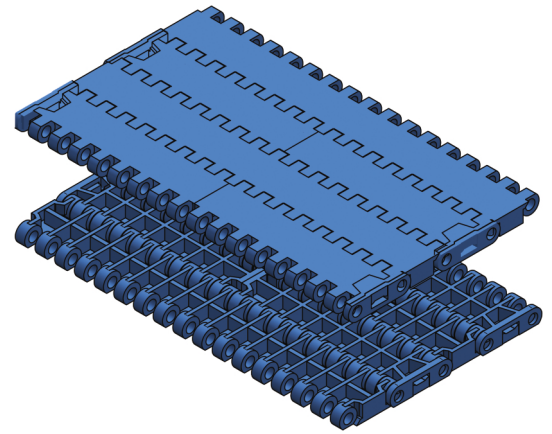


T-1200 SERIES



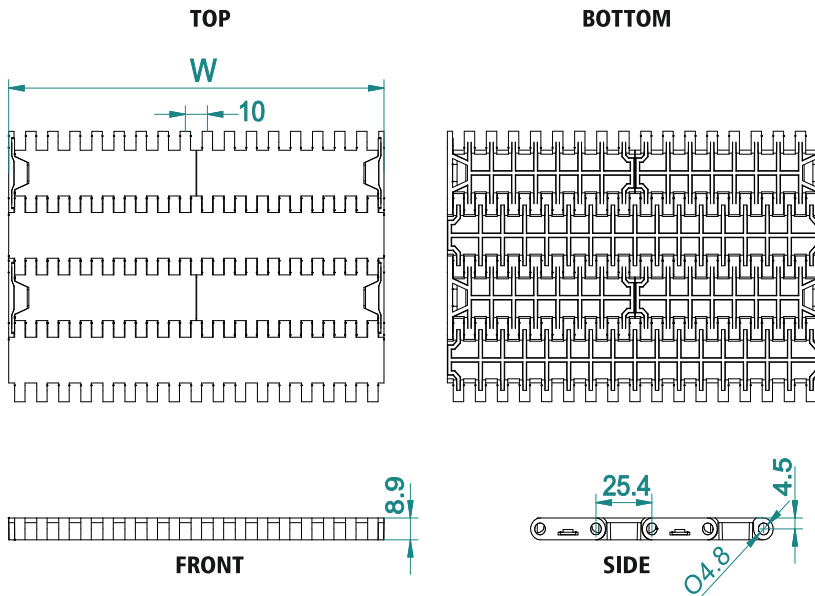
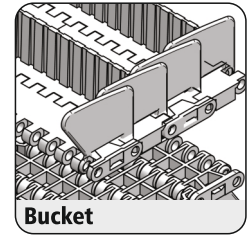
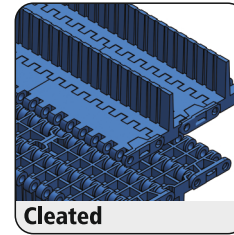
Pitch	25.4 mm
Surface type	Flat Top
Belt Thickness	8.8 mm
Pin Dia	4.5 mm
Drive System	Central
Standard Size Width	85 / 171.5 mm (± 10 mm)
Open Area	0 %
Approved	FDA
Belt Movement	Bi - Directional



AVAILABLE COLOURS



For Customised Colour variation please contact our sales team.



ACCESSORIES

Cleat Height*	9 To 50 mm
Scoop Cleat Height	-----
Bent Cleat Height	-----
Side Wall Height	25 / 50 mm

* Can be customised

SUGGESTED INDUSTRIES



AVAILABLE WIDTH (W)

In mm	85	172	258	344	430	516	687	+...n
In inch	3.3"	6.8"	10.2"	13.5"	16.9"	20.3"	27"	+...n

* For exact customised width dimension please contact our sales team.

BELT DATA

Belt Material	Belt Strength		Belt Temperature		Belt Weight	
	N/m	Kg/m	°C / °F Min	°C / °F Max	Kg/m ²	lb/ft ²
Polypropylene (PP)	8080	808	+1 / +33.8	+90 / +194	4.14	0.85
Acetal / POM	17280	1728	-40 / -40	+90 / +194	6.2	1.27

BRAND COMPATIBILITY

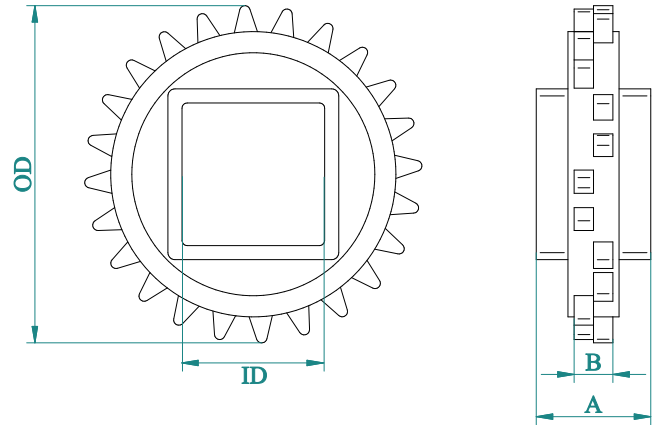
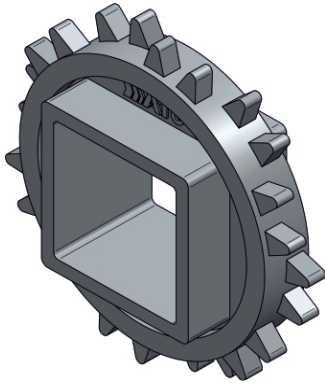
ATC	EURO	HABASIT	HAIRISE	MODUTECH	INTRALOX	YA-VA	HONG'S
T-1200	SERIES A24	M2420 M2470 208 FT	HAR1000	EC254C	SERIES 1400	YS-300-13	HS-F1000A

*The above content is only for reference.

*Bold series are direct replacement with individual brands.

T-1200

SPROCKET DATA



Material: POM/ Polyketone / UHMW/ Nylon



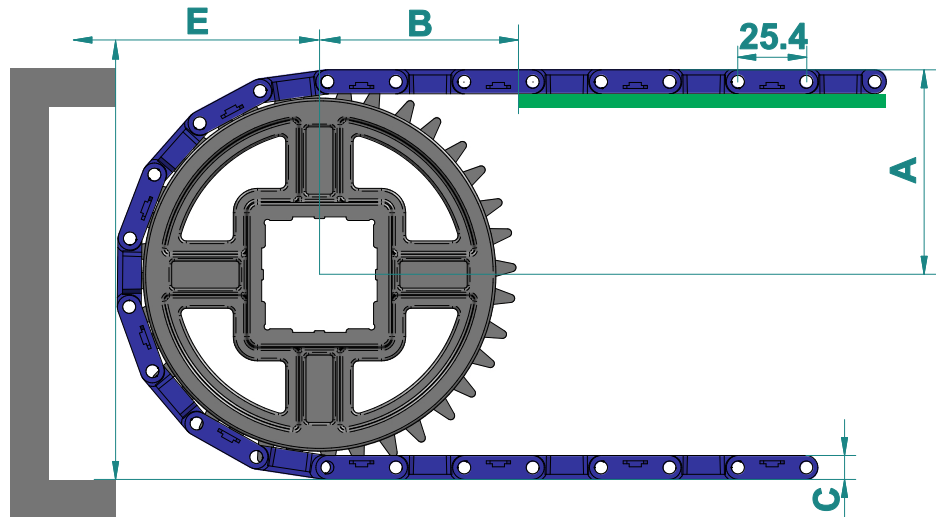
Temp. Range: -40 to 90 °C

No of teeth	OD		A		B		M/C	Available ID	
	mm	inch	mm	inch	mm	inch		M/D	M/D
12	96	3.78	32.5	1.28	11	0.43		○ - 25,30,35	□ - 40
16	129	5.08	32.5	1.28	11	0.43		○ - 25,30,35	□ - 40
18	146	5.75	32.5	1.28	11	0.43		○ - 25,30,35	□ - 40
20	163	6.42	32.5	1.28	11	0.43		○ - 25,30,35	□ - 40

* A- Sprocket thickness, B- Teeth thickness, ID- Inner diameter, OD- Outer diameter, M/C - Machined, M/D - Moulded

* Type of Bore : ☆ - Round & Square , □ - Square, ○ - Round
*All the dimension have tolerance ± 1 or 2 mm approximately.

CONVEYOR DESIGN DATA



No. of Teeth	OD		A		B		C		E	
	mm	inch	mm	inch	mm	inch	mm	inch	mm	inch
12	96	3.78	53	2.08	67	2.64	9	0.35	60	2.36
16	129	5.08	68	2.67	90	3.54	9	0.35	76	2.99
18	146	5.75	76	2.98	102	4.02	9	0.35	85	3.35
20	163	6.42	82	3.34	114	4.49	9	0.35	93	3.66

* A- Distance between shaft centre to belt top
B- Distance between shaft centre to beginning of wear strip,

C- Belt thickness, E- Distance between shaft centre to conveyor structure/ frame
*All the dimension have tolerance ± 1 or 2 mm approximately.