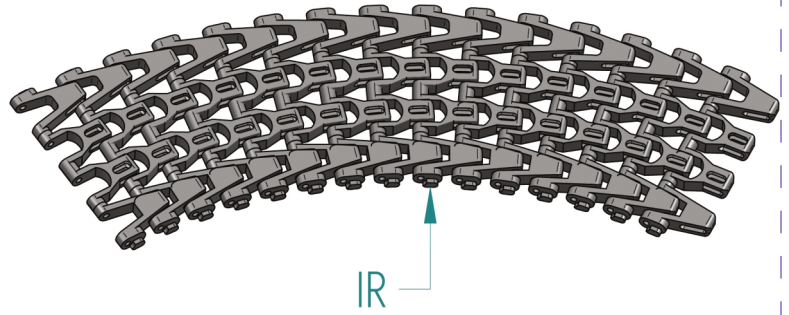


T-1100

SERIES



Pitch	50 mm
Surface type	Flush Grid
Belt Thickness	11 mm
Pin Dia	6 mm
Drive System	Central
Standard Size Width	50 / 100 mm (±50 mm)
Open Area	43%
Inner Radius	2.7 x Width of Modular Belt
Approved	FDA
Belt Movement	Bi - Directional



AVAILABLE COLOURS

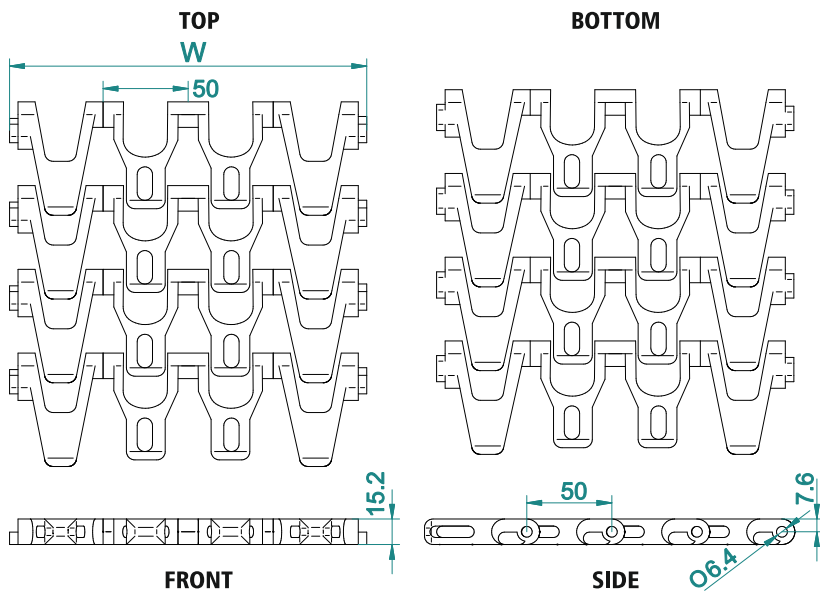


For Customised Colour variation please contact our sales team.

ACCESSORIES

Cleat Height*	----
Scoop Cleat Height	----
Bent Cleat Height	----
Side Wall Height	----

* Can be customised



SUGGESTED INDUSTRIES



AVAILABLE WIDTH (W)

In mm	152	203	229	254	608	761	913	+...n
In inch	6"	8"	9"	10"	24"	30"	36"	+...n

* For exact customised width dimension please contact our sales team.

BELT DATA

Belt Material	Belt Strength		Belt Temperature		Belt Weight	
	N/m	Kg/m	°C / °F Min	°C / °F Max	Kg/m2	lb/ft2
Polypropylene (PP)	19000	1900	+1 / +33.8	+90 / +194	4.47	0.92
Acetal / POM	27000	2700	-40 / -40	+90 / +194	6.55	1.34

BRAND COMPATIBILITY

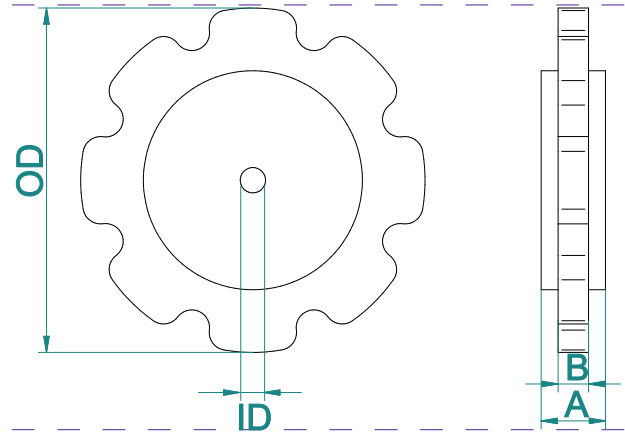
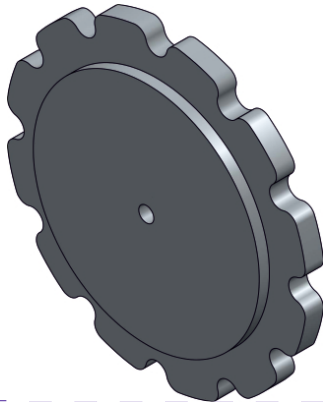
ATC	INTRALOX	HABASIT	HAIRISE	MODUTECH	MOVEX	SYSTEM PLAST	REXNORD
T-1400	SERIES 2400	M2540	HAR2540	EC254 R	556 FT	2256	1255
		M2500	HAR2400				
		M3800	HAR2401				
		IS 610 R					

*The above content is only for reference.

*Bold series are direct replacement with individual brands.

T-1100

SPROCKET DATA



Material: POM/ Polyketone / UHMW/ Nylon

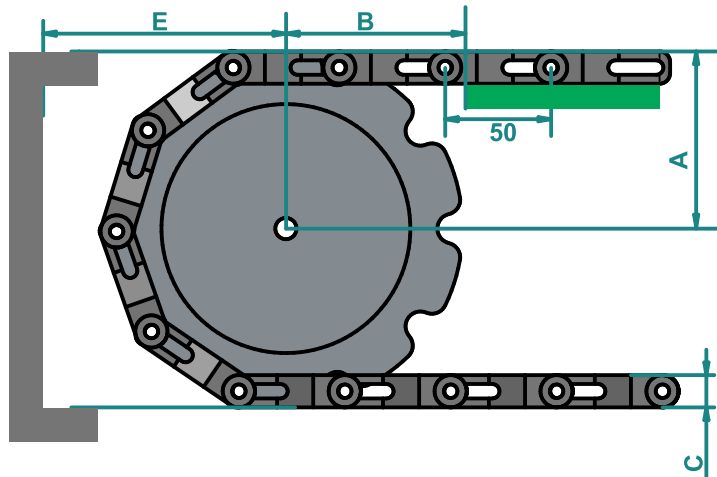
Temp. Range: -40 to 90 °C

No of teeth	OD		A		B		Available ID	
	mm	inch	mm	inch	mm	inch	M/C	M/D
8	134						☆	○ - 25,30,35 □ - 40
10	167						☆	○ - 25,30,35 □ - 40
12	200						☆	○ - 25,30,35 □ - 40

* A- Sprocket thickness, B- Teeth thickness, ID- Inner diameter, OD- Outer diameter, M/C - Machined, M/D - Moulded

* Type of Bore : ☆ - Round & Square , □ - Square , ○ - Round
*All the dimension have tolerance ± 1 or 2 mm approximately.

CONVEYOR DESIGN DATA



No. of Teeth	OD		A		B		C		E	
	mm	inch	mm	inch	mm	inch	mm	inch	mm	inch
8										
10										
12										

* A- Distance between shaft centre to belt top
B- Distance between shaft centre to beginning of wear strip,

C- Belt thickness, E- Distance between shaft centre to conveyor structure/ frame
*All the dimension have tolerance ± 1 or 2 mm approximately.