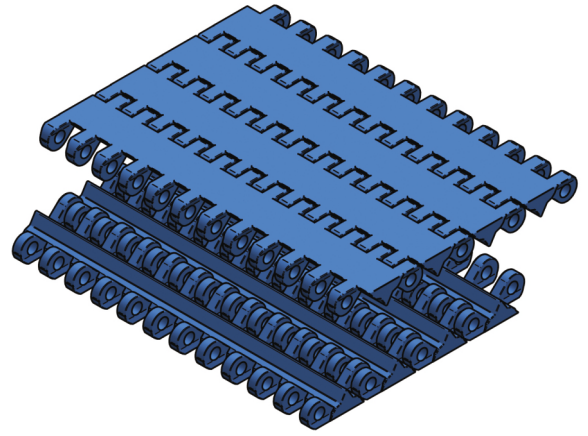


# T-1000 SERIES



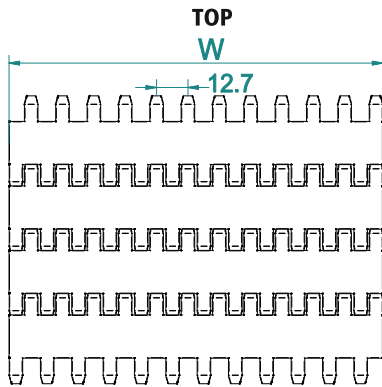
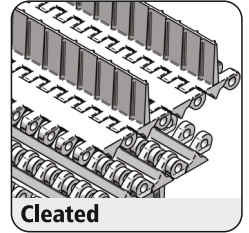
Pitch	25.4 mm
Surface type	Flat Top
Belt Thickness	10 mm
Pin Dia	4.5 mm
Drive System	Central
Standard Size Width	76 / 152.4 mm ( $\pm 12.6$ mm)
Open Area	0 %
Approved	FDA
Belt Movement	Bi - Directional



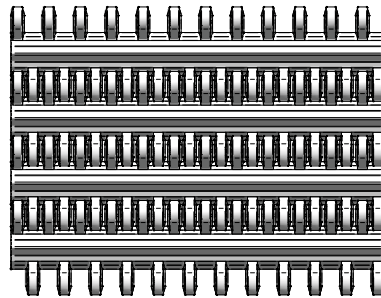
## AVAILABLE COLOURS



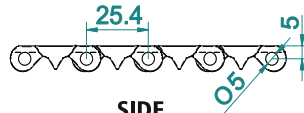
For Customised Colour variation please contact our sales team.



## BOTTOM



FRONT



SIDE

## ACCESSORIES

Cleat Height*	9 To 50 mm
Scoop Cleat Height	-----
Bent Cleat Height	-----
Side Wall Height	-----

\* Can be customised

## SUGGESTED INDUSTRIES



## AVAILABLE WIDTH (W)

In mm	76	152	208	254	354	610	762	+...n
In inch	3"	6"	8.1"	10"	13.9"	24"	30"	+...n

\* For exact customised width dimension please contact our sales team.

## BELT DATA

Belt Material	Belt Strength		Belt Temperature		Belt Weight	
	N/m	Kg/m	°C / °F Min	°C / °F Max	Kg/m2	lb/ft2
Polypropylene (PP)	9610	961	+1 / +33.8	+90 / +194	5.24	0.18
Acetal / POM	17280	1728	-40 / -40	+90 / +194	7.2	1.47

## BRAND COMPATIBILITY

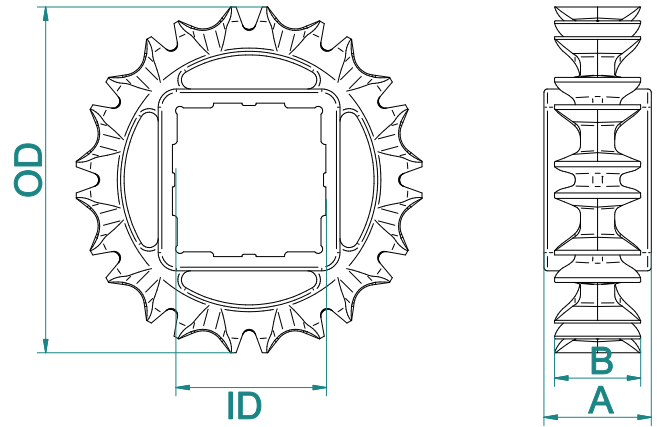
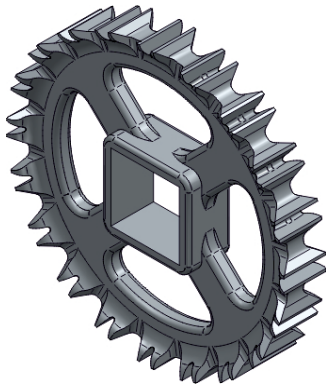
ATC	UNI	HABASIT	HAIRISE	MODUTECH	INTRALOX	YA-VA	HONG'S
T-1000	UNI S-MPB	M2510 ST610 208 FT	HAR1600T	EC254C	SERIES 1600	YS-300-9	HS-200A-HD

\*The above content is only for reference.

\*Bold series are direct replacement with individual brands.

# T-1000

## SPROCKET DATA



Material: POM/ Polyketone / UHMW/ Nylon



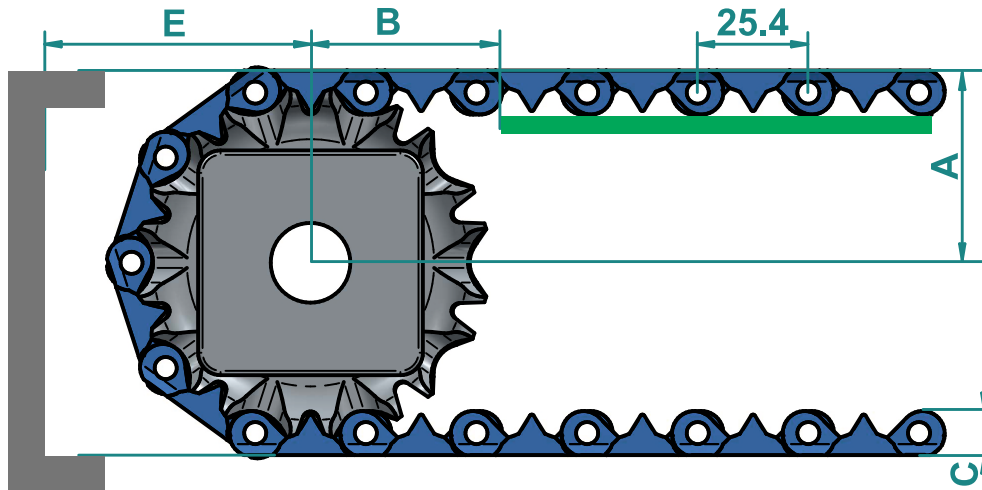
Temp. Range: -40 to 90 °C

No of teeth	OD		A		B		M/C	Available ID	
	mm	inch	mm	inch	mm	inch		M/C	M/D
10	80	3.15	30	1.18	24.7	0.97	☆	○ - 25,30,35	□ - 40
12	97	3.82	30	1.18	24.7	0.97	☆	○ - 25,30,35	□ - 40
16	129	5.08	30	1.18	24.7	0.97	☆	○ - 25,30,35	□ - 40
20	162	6.38	30	1.18	24.7	0.97	☆	○ - 25,30,35	□ - 40

\* A- Sprocket thickness, B- Teeth thickness, ID- Inner diameter, OD- Outer diameter, M/C - Machined, M/D - Moulded

\* Type of Bore : ☆ - Round & Square , □ - Square, ○ - Round  
\*All the dimension have tolerance  $\pm 1$  or 2 mm approximately.

## CONVEYOR DESIGN DATA



No. of Teeth	OD		A		B		C		E	
	mm	inch	mm	inch	mm	inch	mm	inch	mm	inch
10	80	3.15	45	1.77	56	2.20	10	0.39	52	2.05
12	97	3.82	52	2.05	67	2.64	10	0.39	60	2.36
16	129	5.08	66	2.60	91	3.58	10	0.39	76	2.99
20	162	6.38	81	3.17	113	4.45	10	0.39	93	3.66

\* A- Distance between shaft centre to belt top  
B- Distance between shaft centre to beginning of wear strip,

C- Belt thickness, E- Distance between shaft centre to conveyor structure/ frame  
\*All the dimension have tolerance  $\pm 1$  or 2 mm approximately.