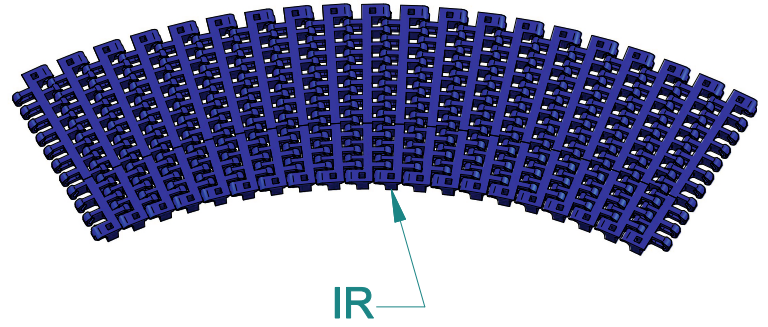


T-800

SERIES



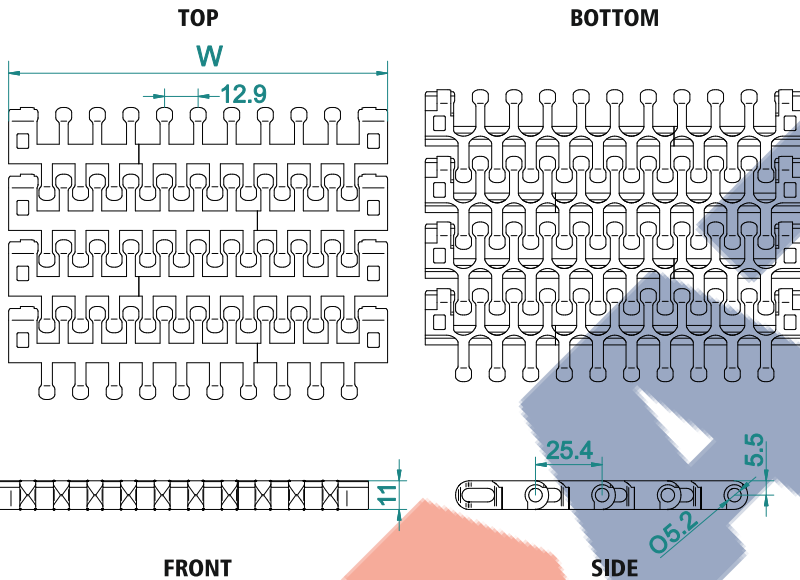
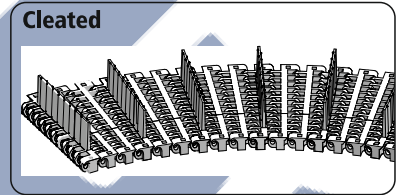
Pitch	25.4 mm
Surface type	Flush Grid
Belt Thickness	11 mm
Pin Dia	4 mm
Drive System	Central
Standard Size Width	152 mm (±12.9 mm)
Open Area	42%
Inner Radius	2.5 x Width of Modular Belt
Approved	FDA
Belt Movement	Bi - Directional



AVAILABLE COLOURS



For Customised Colour variation please contact our sales team.



AVAILABLE WIDTH (W)

In mm	152	203	229	254	608	761	913	+...n
In inch	6"	8"	9"	10"	24"	30"	36"	+...n

* For exact customised width dimension please contact our sales team.

BELT DATA

Belt Material	Belt Strength		Belt Temperature		Belt Weight	
	N/m	Kg/m	°C / °F Min	°C / °F Max	Kg/m2	lb/ft2
Polypropylene (PP)	19000	1900	+1 / +33.8	+90 / +194	4.47	0.92
Acetal / POM	27000	2700	-40 / -40	+90 / +194	6.55	1.34

BRAND COMPATIBILITY

ATC	INTRALOX	HABASIT	HAIRISE	MODUTECH	MOVEX	SYSTEM PLAST	REXNORD
T-1400	SERIES 2400	M2540	HAR2540	EC254 R	556 FT	2256	1255
		M2500	HAR2400				
		M3800	HAR2401				
		IS 610 R					

*The above content is only for reference.

*Bold series are direct replacement with individual brands.

ACCESSORIES

Cleat Height	25 / 50 mm (Customised)
Scoop Cleat Height	-----
Bent Cleat Height	-----
Side Wall Height	-----

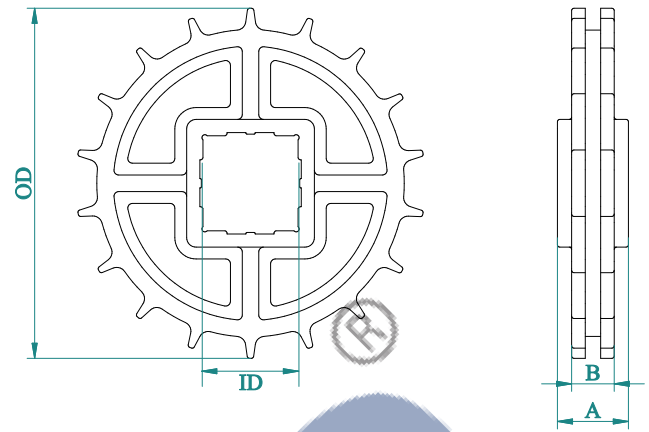
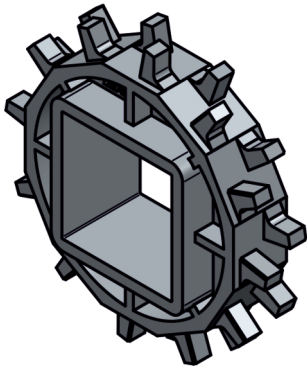
* Can be customised

SUGGESTED INDUSTRIES



T-800

SPROCKET DATA



Material: POM/ Polyketone / UHMW/ Nylon



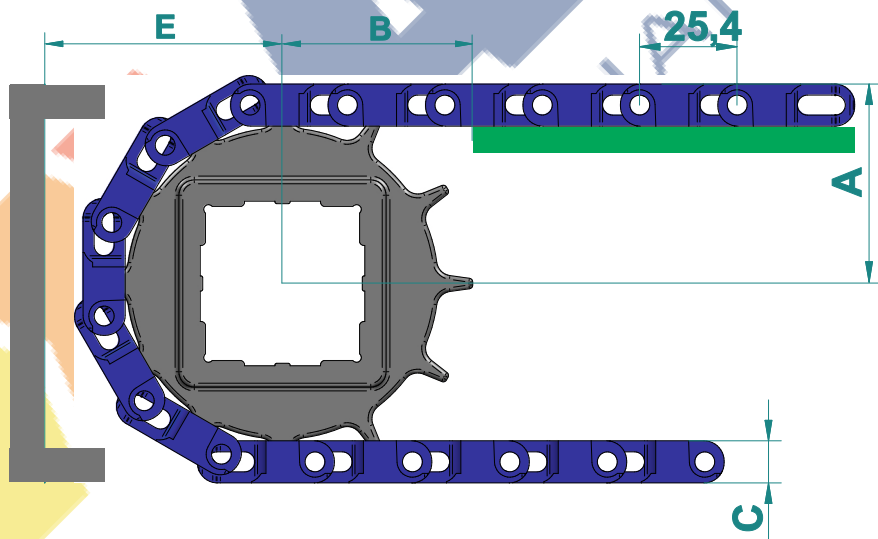
Temp. Range: -42 to 90 °C

No of teeth	OD		A		B		M/C	Available ID	
	mm	inch	mm	inch	mm	inch		M/C	M/D
8	65	2.56	30	1.18	18	0.71	☆	○ - 25,30,35 □ - 40	
10	82	3.23	30	1.18	18	0.71	☆	○ - 25,30,35 □ - 40	
12	99	3.90	30	1.18	18	0.71	☆	○ - 25,30,35 □ - 40	
16	132	5.20	30	1.18	18	0.71	☆	○ - 25,30,35 □ - 40	
18	149	5.87	30	1.18	18	0.71	☆	○ - 25,30,35 □ - 40	
20	165	6.50	30	1.18	18	0.71	☆	○ - 25,30,35 □ - 40	

* A- Sprocket thickness, B- Teeth thickness, ID- Inner diameter, OD- Outer diameter, M/C - Machined, M/D - Moulded

* Type of Bore : ☆ - Round & Square, □ - Square, ○ - Round
*All the dimension have tolerance ± 1 or 2 mm approximately.

CONVEYOR DESIGN DATA



No. of Teeth	OD		A		B		C		E	
	mm	inch	mm	inch	mm	inch	mm	inch	mm	inch
8	65	2.56	26.5	2.56	47	1.85	11	0.43	44	1.73
10	82	3.23	33.5	3.23	57.5	2.26	11	0.43	53	2.09
12	99	3.90	40.5	3.90	69	2.72	11	0.43	61.5	2.42
16	132	5.20	54.5	5.20	92	3.62	11	0.43	78	3.07
18	149	5.87	61.5	5.87	104	4.09	11	0.43	86.5	3.41
20	165	6.50	68	6.50	115	4.53	11	0.43	94	3.70

* A- Distance between shaft centre to belt top
B- Distance between shaft centre to beginning of wear strip,

C- Belt thickness, E- Distance between shaft centre to conveyor structure/ frame
*All the dimension have tolerance ± 1 or 2 mm approximately.