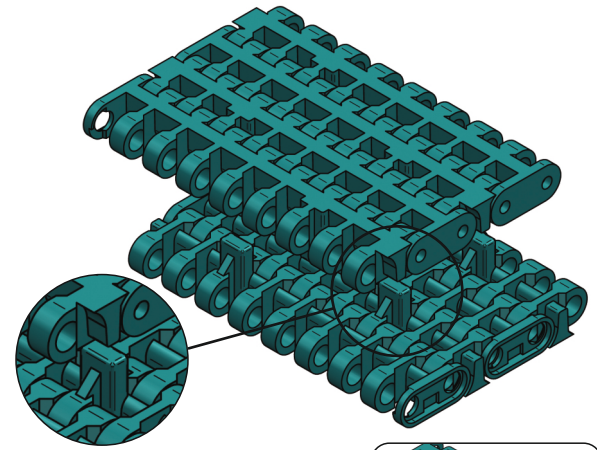


T-1600 FLUSH GRID

SERIES



Pitch	12.7 mm
Surface type	Flat Top
Belt Thickness	9 mm
Pin Dia	4.5 mm
Drive System	Central
Standard Size Width	86 mm
Open Area	16 %
Approved by	FDA
Belt Movement	Bi - Directional



With Posi-track



Without Posi-track

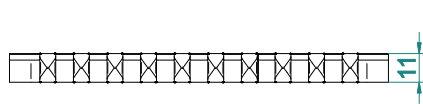
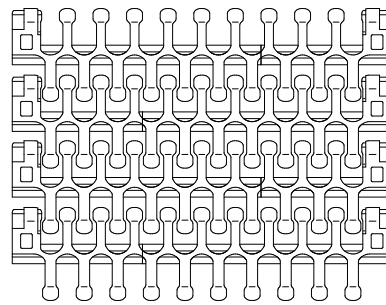
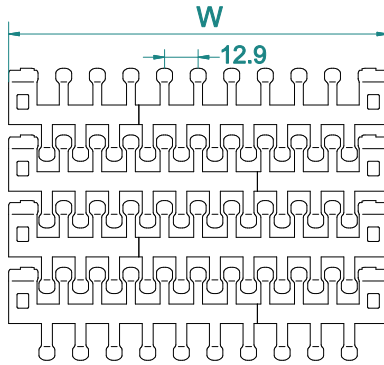
AVAILABLE COLOURS



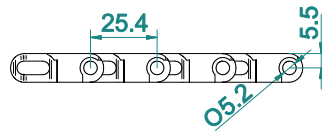
For Customised Colour variation please contact our sales team.

TOP

BOTTOM



FRONT



SIDE

AVAILABLE WIDTH (W)

In mm	85	170	255	340	425	510	680	+ ...n
In inch	3.4"	6.7"	10"	13.4"	16.7"	20"	26.8"	+ ...n

* For exact customised width dimension please contact our sales team.

BELT DATA

Belt Material	Belt Strength		Belt Temperature		Belt Weight	
	N/m	Kg/m	°C / °F Min	°C / °F Max	Kg/m ²	lb/ft ²
Polypropylene (PP)	10000	1000	+1 / +33.8	+90 / +194	5.23	1.07
Acetal / POM	14000	1400	-40 / -40	+90 / +194	7.52	1.54

BRAND COMPATIBILITY

ATC	UNI	REXNORD	HAIRISE	MOVEX	HABASIT	YA-VA	EURO
T-1600	UNI M-TTB	596	HAR500	520	M1280 SM 605	YS-100	C-12

*The above content is only for reference.

*Bold series are direct replacement with individual brands.

ACCESSORIES

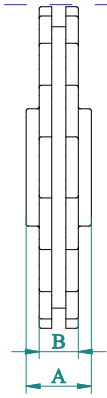
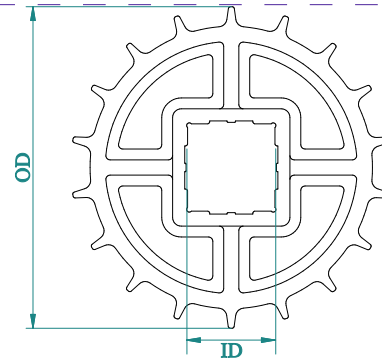
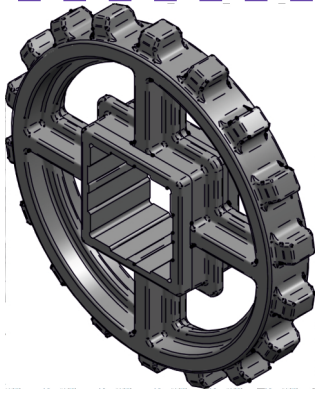
Cleat Height	----
Scoop Cleat Height	----
Bent Cleat Height	----
Side Wall Height	----

SUGGESTED INDUSTRIES



T-1600 FLUSH GRID

SPROCKET DATA



Material: POM/ Polyketone / UHMW/ Nylon

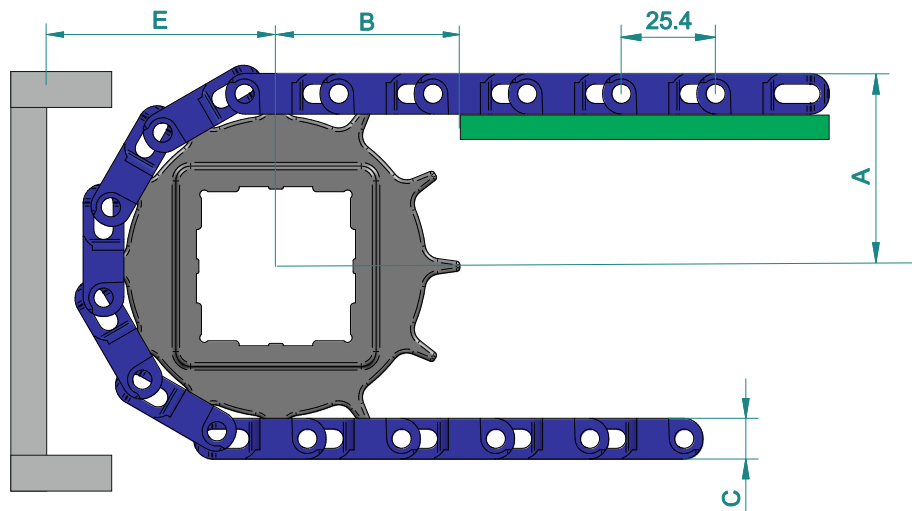
Temp. Range: -40 to 90 °C

No of teeth	OD		A		B		Available ID	
	mm	inch	mm	inch	mm	inch	M/C	M/D
28	114	4.5	13	0.5	12	0.5	☆	○ - 25,30,35 ◻ - 40
38	154	6.1	13	0.5	12	0.5	☆	○ - 25,30,35 ◻ - 40

* A- Sprocket thickness, B- Teeth thickness, ID- Inner diameter, OD- Outer diameter, M/C - Machined, M/D - Moulded.

* Type of Hole : ☆ - Round & Square , ◻ - Square , ○ - Round
*All the dimensions have tolerance of ± 1or 2 mm approximately.

CONVEYOR DESIGN DATA



No. of Teeth	OD		A		B		C		E	
	mm	inch	mm	inch	mm	inch	mm	inch	mm	inch
28	114	4.5	60	2.4	79.5	3.1	9	0.35	69	2.7
38	154	6.1	78	3.1	107	4.2	9	0.35	89	3.5

* A- Distance between shaft centre to belt top,
B- Distance between shaft centre to beginning of wear strip,

C- Belt thickness, E- Distance between shaft centre to conveyor structure/ frame.
*All the dimension have tolerance ± 1or 2 mm approximately.