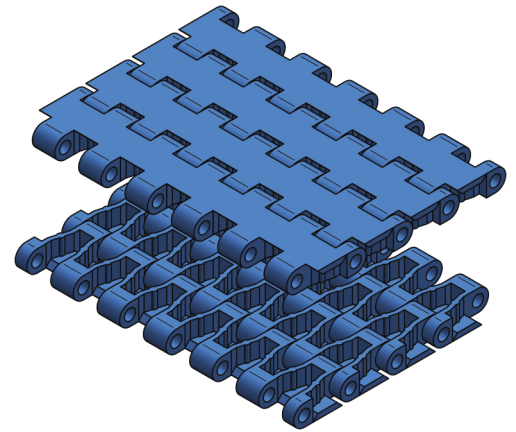


T-400 SERIES



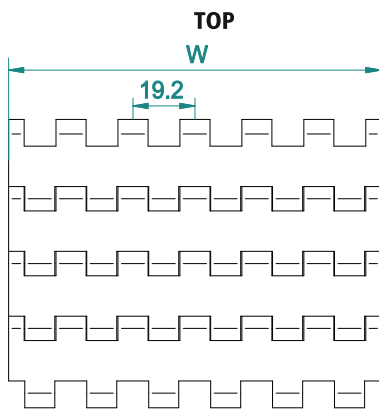
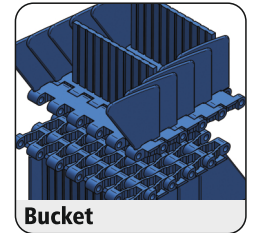
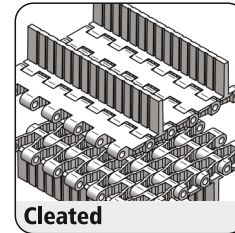
Pitch	19.05 mm
Surface type	Flat Top
Belt Thickness	8.7 mm
Pin Dia	4.5 mm
Drive System	Central
Standard Size Width	76 mm (± 19.2 mm)
Open Area	0 %
Approved by	FDA
Belt Movement	Bi - Directional



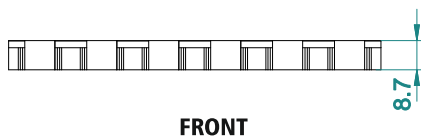
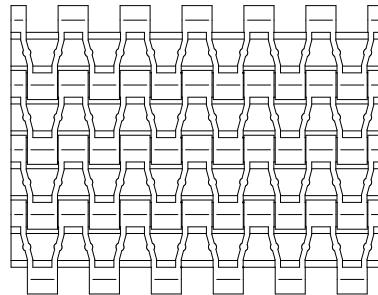
AVAILABLE COLOURS



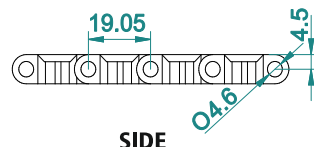
For Customised Colour variation please contact our sales team.



BOTTOM



FRONT



SIDE

ACCESSORIES

Cleat Height	9 To 50 mm (Customised)
Scoop Cleat Height	-----
Bent Cleat Height	-----
Side Wall Height	25 / 50 mm

SUGGESTED INDUSTRIES



AVAILABLE WIDTH (W)

In mm	76	152	230	306	383	460	537	+...n
In inch	3"	6"	9"	12"	15"	18.1"	21.1"	+...n

* For exact customised width dimension please contact our sales team.

BELT DATA

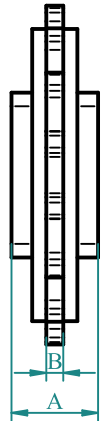
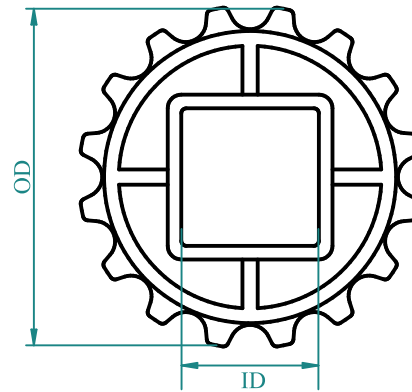
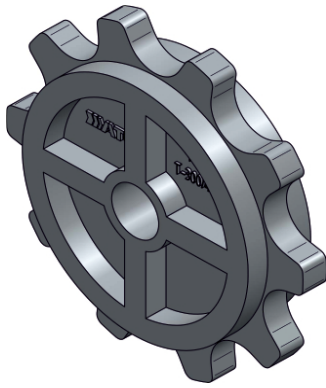
Belt Material	Belt Strength		Belt Temperature		Belt Weight	
	N/m	Kg/m	°C / °F Min	°C / °F Max	Kg/m2	lb/ft2
Polypropylene (PP)	5840	584	+1 / +33.8	+90 / +194	4.26	0.87
Acetal / POM	10500	1050	-40 / -40	+90 / +194	7.11	1.46

BRAND COMPATIBILITY

ATC	UNI	HABASIT	HAIRISE	EURO	MOVEX	YA-VA	HONG'S
T-400	UNI LIGHT	106	HAR5935	SERIES 20	525 HD	YS200-2	HS-1000B

*The above content is only for reference.

*Bold series are direct replacement with individual brands.



Material: POM/ Polyketone / UHMW/ Nylon

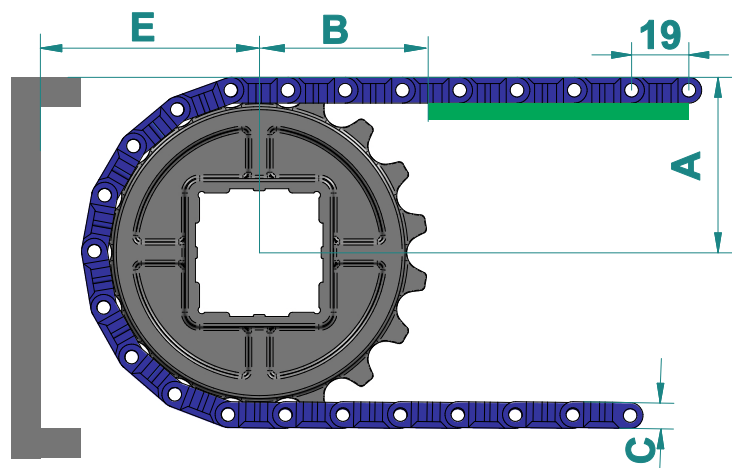
Temp. Range: -4 to 90 °C

No of teeth	OD		A		B		M/C	Available ID	
	mm	inch	mm	inch	mm	inch		M/D	M/D
12	77	3.03	25.5	1.00	5	0.20	☆	○ - 25,30,35	□ - 40
16	101	3.98	25.5	1.00	5	0.20	☆	○ - 25,30,35	□ - 40
18	113	4.45	25.5	1.00	5	0.20	☆	○ - 25,30,35	□ - 40
20	126	4.96	25.5	1.00	5	0.20	☆	○ - 25,30,35	□ - 40
25	156	6.14	25.5	1.00	5	0.20	☆	○ - 25,30,35	□ - 40

* A- Sprocket thickness, B- Teeth thickness, ID- Inner diameter, OD- Outer diameter, M/C - Machined, M/D - Moulded

* Type of Bore : ☆ - Round & Square, □ - Square, ○ - Round
*All the dimension have tolerance ± 1 or 2 mm approximately.

CONVEYOR DESIGN DATA



No. of Teeth	OD		A		B		C		E	
	mm	inch	mm	inch	mm	inch	mm	inch	mm	inch
12	77	3.03	43	1.68	54	2.13	9	0.35	50.5	1.99
16	101	3.98	53	2.09	70	2.76	9	0.35	62.5	2.46
18	113	4.45	59	2.31			9	0.35	68.5	2.70
20	126	4.96	64	2.53	88	3.46	9	0.35	75	2.95
25	156	6.14	78	3.06	109	4.29	9	0.35	90	3.54

* A- Distance between shaft centre to belt top
B- Distance between shaft centre to beginning of wear strip,

C- Belt thickness, E- Distance between shaft centre to conveyor structure/ frame
*All the dimension have tolerance ± 1 or 2 mm approximately.