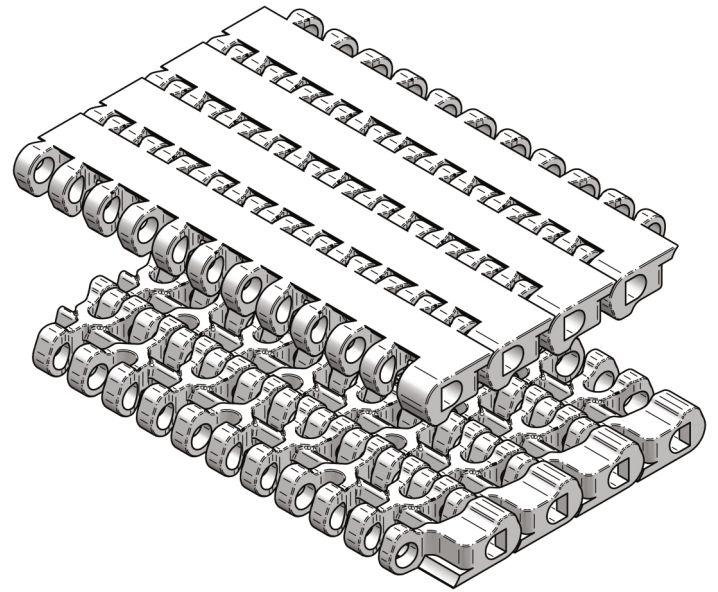


T-200 SERIES



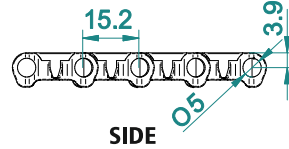
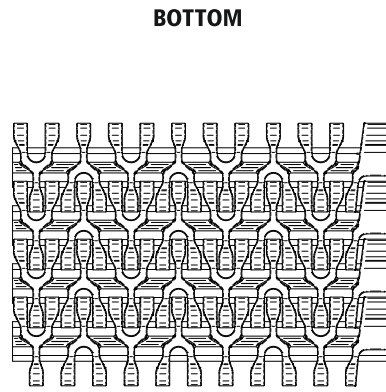
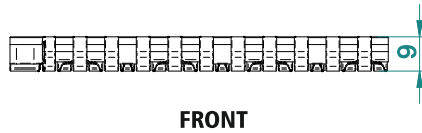
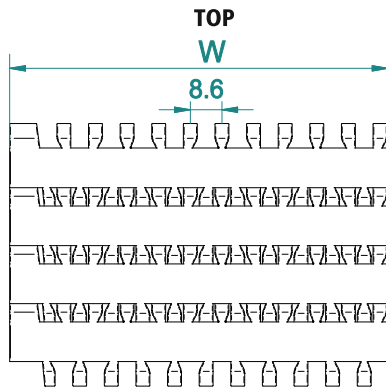
Pitch	15.2 mm
Surface type	Flat Top
Belt Thickness	9 mm
Pin Dia	4.5 mm
Drive System	Central
Standard Size Width	101 / 152.4 mm (± 8 mm)
Open Area	0 %
Approved by	FDA
Belt Movement	Bi - Directional



AVAILABLE COLOURS



For Customised Colour variation please contact our sales team.



ACCESSORIES

Cleat Height	----
Scoop Cleat Height	----
Bent Cleat Height	----
Side Wall Height	----

SUGGESTED INDUSTRIES



AVAILABLE WIDTH (W)

In mm	101	152	304	358	610	762	915	+...n
In inch	4"	6"	12"	14"	24"	30"	36"	+...n

* For exact customised width dimension please contact our sales team.

BELT DATA

Belt Material	Belt Strength		Belt Temperature		Belt Weight	
	N/m	Kg/m	°C / °F Min	°C / °F Max	Kg/m ²	lb/ft ²
Polypropylene (PP)	10400	1040	+1 / +33.8	+90 / +194	4.8	0.98
Acetal / POM	17900	1790	-40 / -40	+90 / +194	6.93	1.42

BRAND COMPATIBILITY

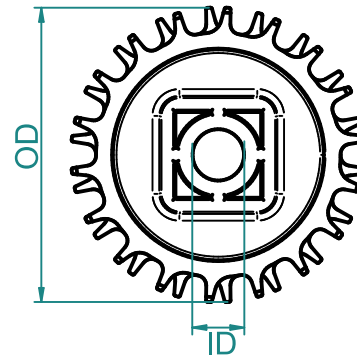
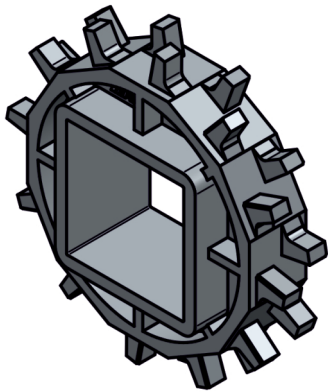
ATC	INTRALOX	HABASIT	HAIRISE	MODUTECH	MOVEX	YA-VA	HONG'S
T-200	SERIES 1100	M5032	HAR7705 HAR1505 HAR1506	EC254 R	525 HD	YS110-1	HS-1100A

*The above content is only for reference.

*Bold series are direct replacement with individual brands.

T-200

SPROCKET DATA



Material: POM/ Polyketone / UHMW/ Nylon



Temp. Range: -40 to 90 °C

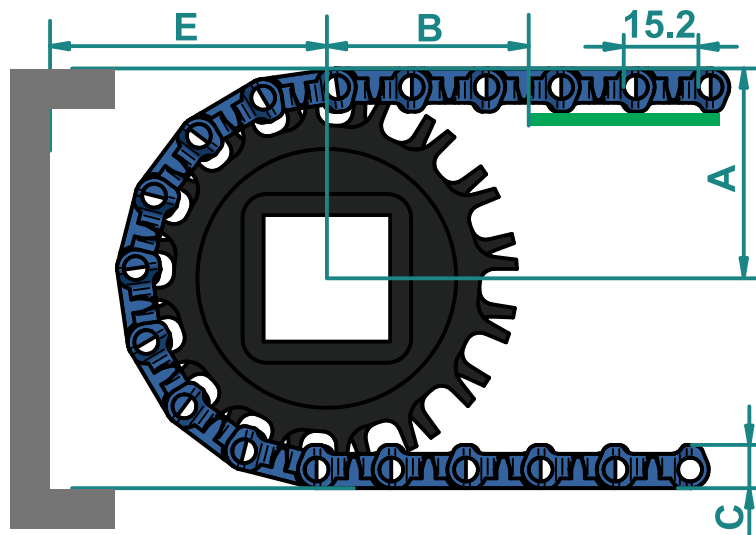
No of teeth	OD		A		B		Available ID	
	mm	inch	mm	inch	mm	inch	M/C	M/D
16	79	3.11	24	0.95	18.5	0.73	-N/A-	○ - 25,30,35 □ - 40
18	86	3.39	24	0.95	18.5	0.73	-N/A-	○ - 25,30,35 □ - 40
24	118	4.65	24	0.95	18.5	0.73	-N/A-	○ - 25,30,35 □ - 40

* A- Sprocket thickness, B- Teeth thickness, ID- Inner diameter, OD- Outer diameter, M/C - Machined, M/D - Moulded.

* Type of Bore : ☆ - Round & Square , □ - Square , ○ - Round

*All the dimensions have tolerance of ± 1 or 2 mm approximately.

CONVEYOR DESIGN DATA



No. of Teeth	OD		A		B		C		E	
	mm	inch	mm	inch	mm	inch	mm	inch	mm	inch
16	79	3.11	42	1.65	55	2.17	9	0.35	51	2.01
18	86	3.39	45	1.75	60	2.36	9	0.35	55	2.17
21	118	4.65	58	2.28	82.5	3.25	9	0.35	71	2.80

* A- Distance between shaft centre to belt top, B- Distance between shaft centre to beginning of wear strip,

C- Belt thickness, E- Distance between shaft centre to conveyor structure/ frame.

*All the dimension have tolerance ± 1 or 2 mm approximately.