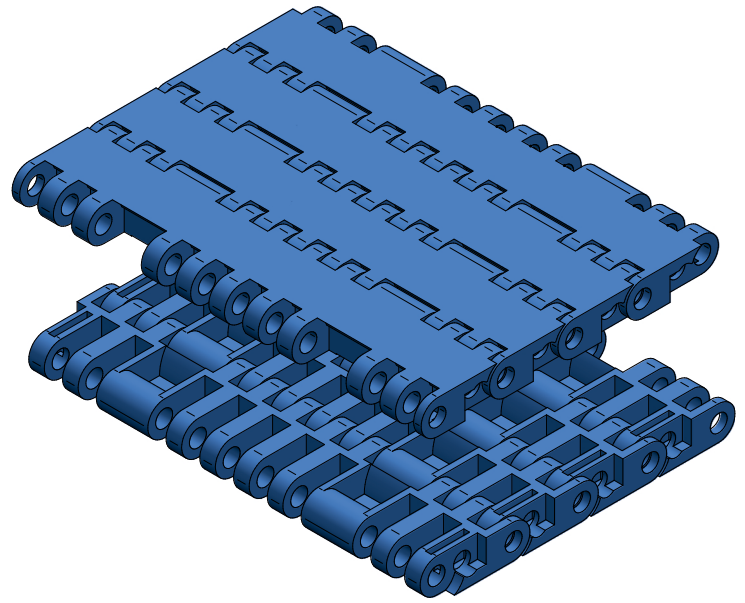


T-100 SERIES



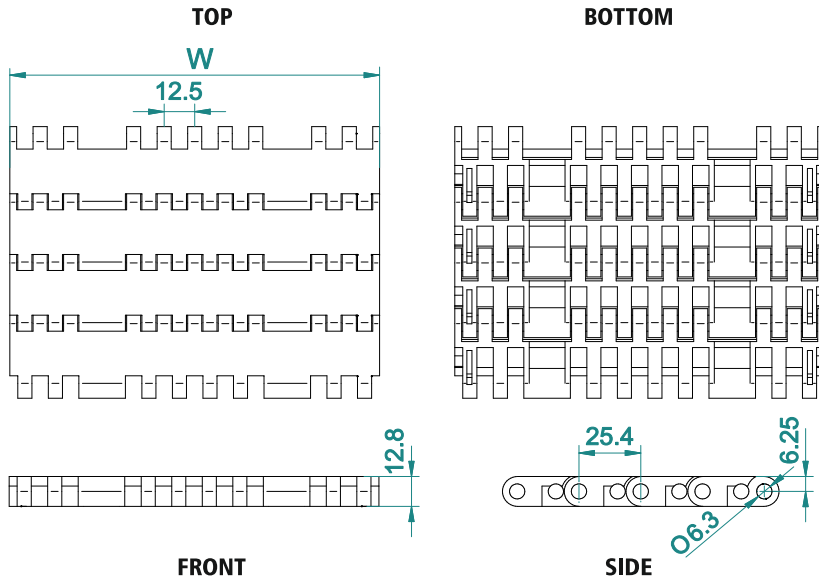
Pitch	25.4 mm
Surface type	Flat Top
Belt Thickness	12.8 mm
Pin Dia	6 mm
Drive System	Central
Standard Size Width	76/152.4 mm (± 76 mm)
Open Area	0 %
Approved by	FDA
Belt Movement	Bi - Directional



AVAILABLE COLOURS



For Customised Colour variation please contact our sales team.



AVAILABLE WIDTH (W)

In mm	76	152	229	304	381	458	610	+...n
In inch	3"	6"	9"	12"	15"	18"	24"	+...n

* For exact customised width dimension please contact our sales team.

BELT DATA

Belt Material	Belt Strength		Belt Temperature		Belt Weight	
	N/m	Kg/m	°C / °F Min	°C / °F Max	Kg/m ²	lb/ft ²
Polypropylene (PP)	9610	961	+1 / +33.8	+90 / +194	7.64	1.56
Acetal / POM	17280	1728	-40 / -40	+90 / +194	11.91	2.44

BRAND COMPATIBILITY

ATC	INTRALOX	HABASIT	HAIRISE	MODUTECH	MOVEX	YA-VA	HONG'S
T-100	SERIES 1600	M2620 M2670 MB 610	HAR7705	EC254 R	552 FT	2256	HS-201A

*The above content is only for reference.

*Bold series are direct replacement with individual brands.

ACCESSORIES

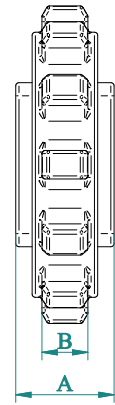
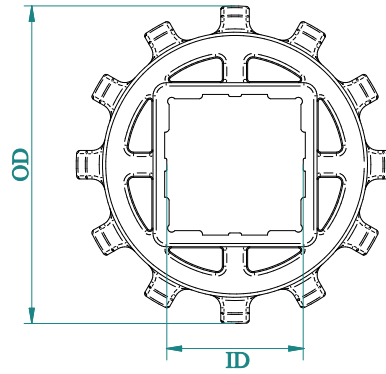
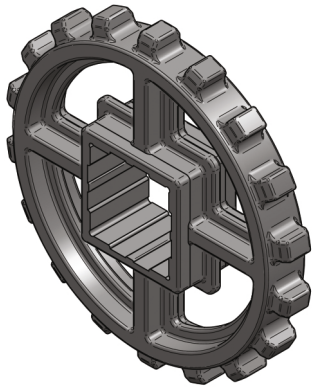
Cleat Height	25 / 50 mm (Customised)
Scoop Cleat Height	-----
Bent Cleat Height	-----
Side Wall Height	-----

SUGGESTED INDUSTRIES



T-100

SPROCKET DATA



Material: POM/ Polyketone / UHMW/ Nylon

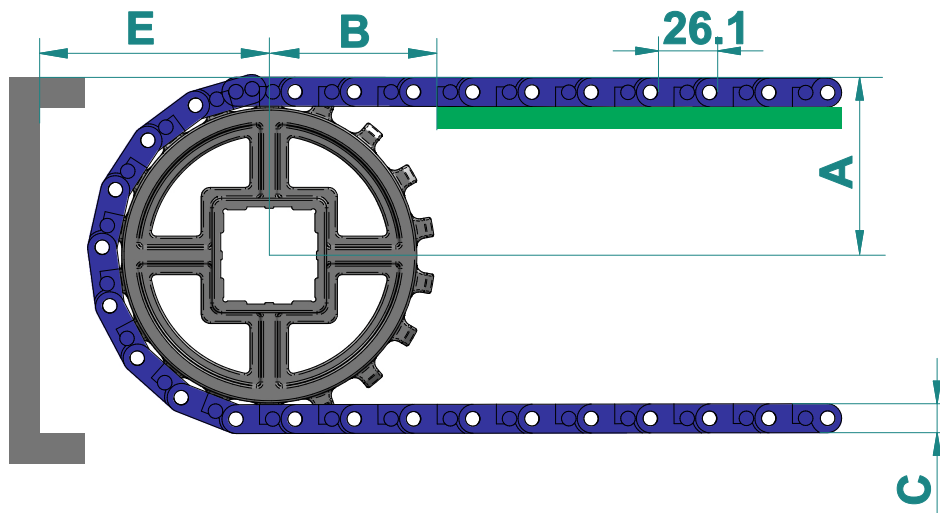
Temp. Range: -42 to 90 °C

No of teeth	OD		A		B		M/C	Available ID	
	mm	inch	mm	inch	mm	inch		M/D	M/D
12	97	3.82	30	1.18	14	0.55	☆	○ - 25,30,35	□ - 40
15	122	4.80	30	1.18	14	0.55	☆	○ - 25,30,35	□ - 40
18	146	5.75	30	1.18	14	0.55	☆	○ - 25,30,35	□ - 40
21	170	6.70	30	1.18	14	0.55	☆	○ - 25,30,35	□ - 40

* A- Sprocket thickness, B- Teeth thickness, ID- Inner diameter, OD- Outer diameter, M/C - Machined, M/D - Moulded.

* Type of Bore : ☆ - Round & Square, □ - Square, ○ - Round.
*All the dimension have tolerance ± 1 or 2 mm approximately.

CONVEYOR DESIGN DATA



No. of Teeth	OD		A		B		C		E	
	mm	inch	mm	inch	mm	inch	mm	inch	mm	inch
12	97	3.82	56	2.20	68	2.68	12.8	0.50	60.5	2.38
15	122	4.80	67	2.64	85	3.35	12.8	0.50	73	2.87
18	146	5.75	78	3.07	91	3.58	12.8	0.50	85	2.28
21	170	6.69	89	3.50	119	4.69	12.8	0.50	97	3.82

* A- Distance between shaft centre to belt top,
B- Distance between shaft centre to beginning of wear strip,

C- Belt thickness, E- Distance between shaft centre to conveyor structure/ frame.
*All the dimension have tolerance ± 1 or 2 mm approximately.